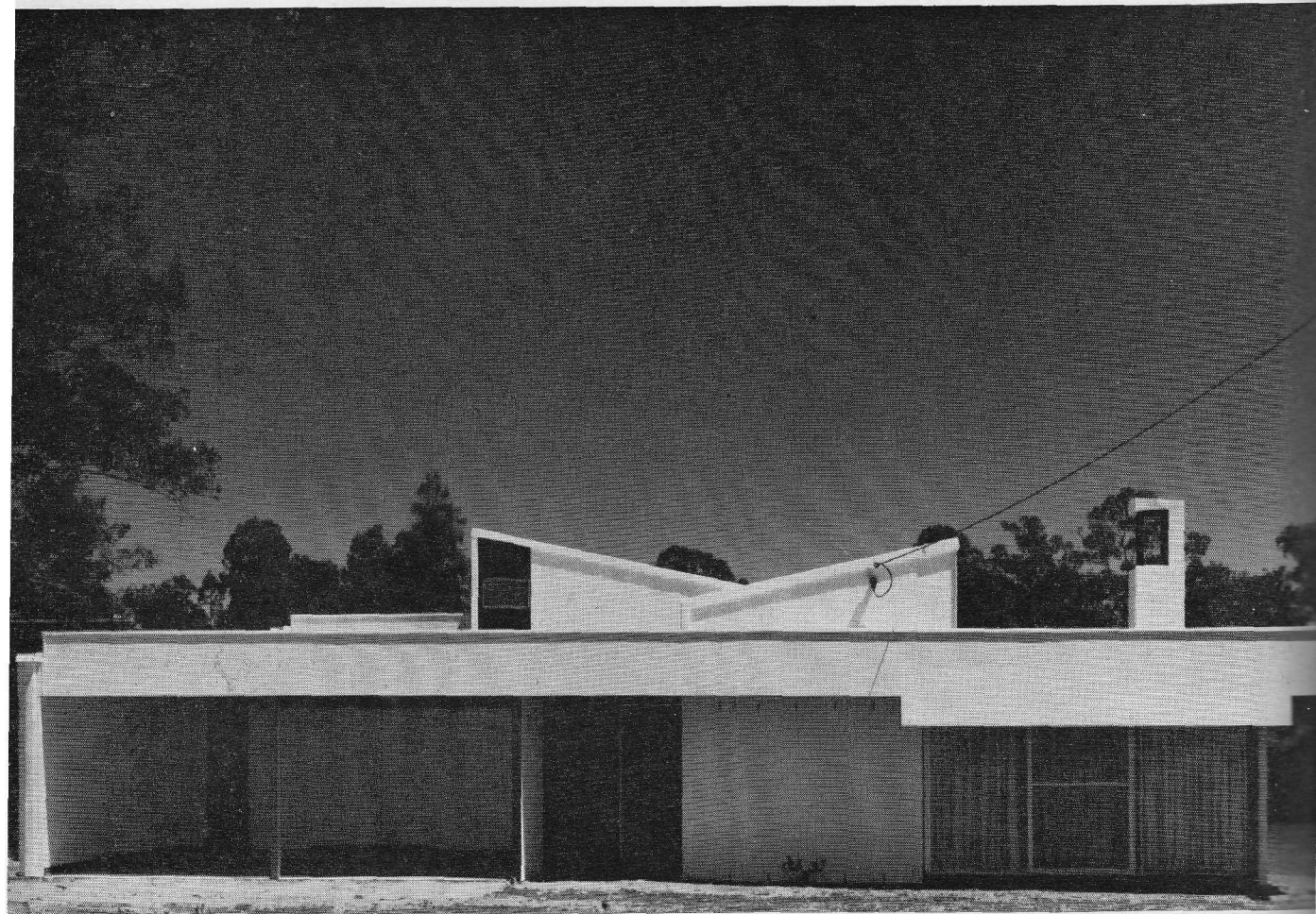


House, Chelmer, Queensland



Client's requirements: a three bedroom house designed for the climate, with a large under house area for tinkering with vintage cars, etc., and a future rumpus room. The house is built with a western frontage to a reach of the Brisbane River. Over windows and doors the deep asbestos cement fascia is dragged down to provide shade. Roof clerestories of 6 ft long metal louvres evacuate warm air and admit winter sun on the north to the kitchen and dining room. The entire house is painted white inside and out, leaving sunlight and shadow to provide interest and changing pattern. Internal ceilings are stained plywood to reduce glare.

Number of levels: 3

Area: 18,000 sq ft

Structure: loadbearing brickwork;

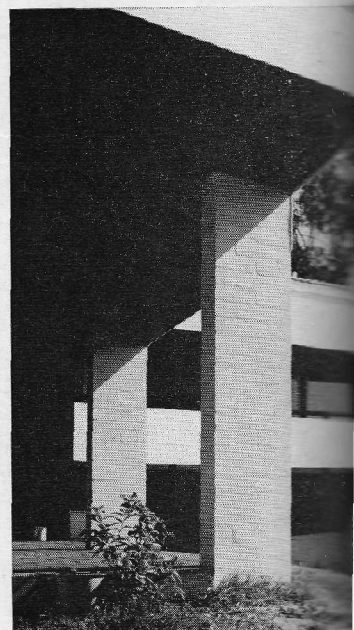
white painted common brick;
3/8 in thick asbestos cement; steel
deck roofing; 4 in reinforced
concrete floor and 4 in x 1 in
timber flooring; plasterboard
linings; plywood ceilings, stained

Heating: open fire

Windows: sliding, aluminium frame

Joinery: stained Queensland
hardwood and Black Bean

architect: John Dalton and
Associates





PHOTOGRAPHS: RICHARD STRINGER

