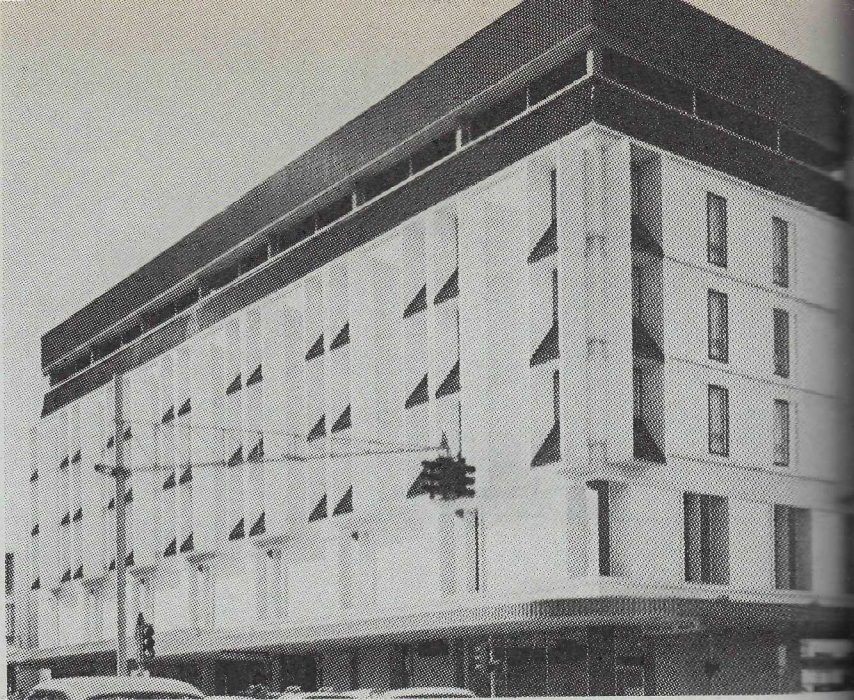


# QUEENSLAND



## Lowths Hotel

Flinders and Stanley Streets, Townsville,  
Queensland

**architect:** Lund, Hutton, Newell, Paulsen  
Pty Ltd

**partner in charge:** John Morton

**structural engineer:** John Koeter

**mechanical and electrical engineer:**

Ariotti, Norman, Hamilton and Bruce

**builder:** R. C. Schrock and Sons

**quantity surveyor:** N. B. Sheridan and

Associates

**Client's requirements:** to provide a hotel  
in the city area consistent with general  
Australian standards for Burns Philp and  
Co Ltd. The basic accommodation  
required was 69 suites (6 VIP suites, 6  
family, 57 twin or double).

The basement contains the lounge bar  
and luncheon dining areas. The ground  
floor contains the various bars, main  
entrance area and concessions such as  
travel service, hairdressing, wine cellar  
and retailing.

The main dining room and kitchens,  
function rooms and cocktail bar are  
grouped on the first floor.

The second, third and fourth floors  
contain the residential suites, with  
individually controlled air-conditioning,  
piped music, radio and television.

The convention area is on the fifth floor  
with associated bar and kitchen.

**Area of site:** 10,890 sq ft

**Overall dimensions:** 165ft x 66ft

**Number of floors:** 6 plus one basement

**Total floor area:** 63,366 sq ft

**Material and method:** reinforced concrete,  
flat plate

**External walls:** 8in square masonry infill  
panels in 10in overall cavity construction;  
painted white externally

**Roof:** galvanised sheet steel on steel  
trusses and purlins

**Windows:** coated steel frames

**Floor finishes:** generally carpet; mosaic  
tiles in bathrooms and toilets; quarry tiles  
in main kitchen and public bar;  
convention room timber

**Wall finishes:** vinyl fabric; glazed tiles in  
bathrooms and toilets

**Ceiling finishes:** suspension system;  
smooth fibrous plaster in guest suites

**Water heating:** mains pressure electric

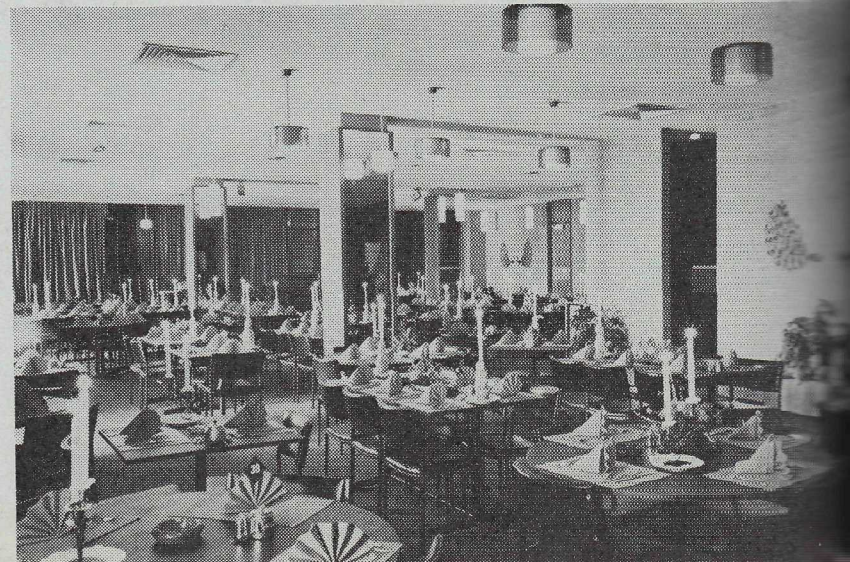
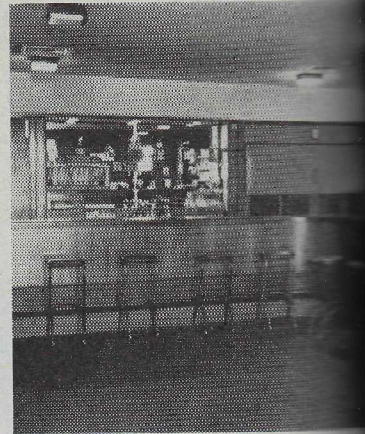
**Air conditioning:** reverse cycle; toilets  
with mechanical exhaust fan

**Lifts:** 2 passenger; 1 service

**Overall cost excluding furnishings:**

\$1,500,000

**Cost per square:** \$2,400 approximately



PHOTOGRAPHY: HEINZ DRASDO, RICHARD STRINGER